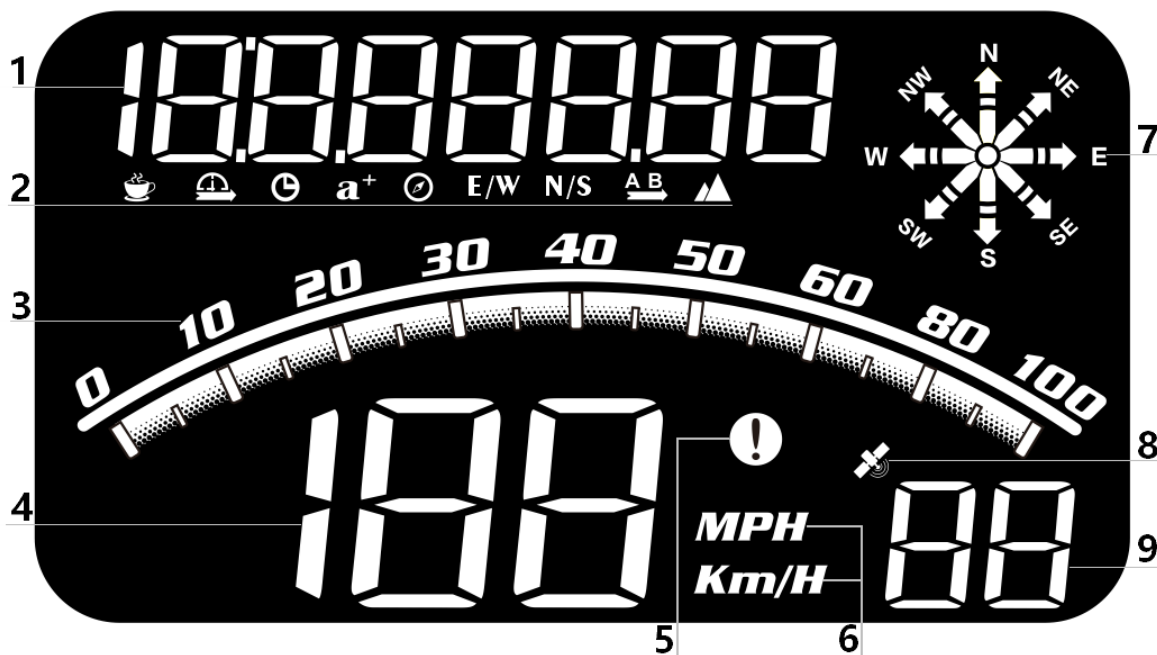


GPS Speed meter: G10

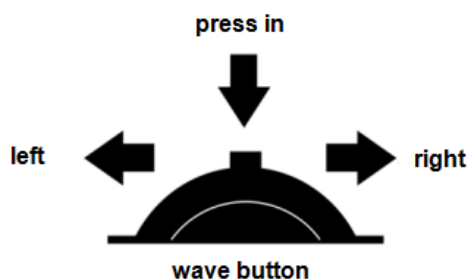
Warning: This product working voltage is 5V, and it is forbidden to use a voltage higher than 5V for power supply.

Display functions:



1. Multi-function display: clock, driving time, travel distance, satellite numbers, acceleration time, longitude, latitude, Dial left or right to switch
2. Function icons: fatigue driving, driving time, clock, acceleration time, direction angle, longitude, latitude, driving distance, altitude
3. Speed progress bar
4. Speed display
5. Speeding alarm icon
6. Vehicle speed unit (MPH=mile ,Km/h=kilometer), compass, satellite number icon
7. The compass can be used normally after the satellite is searched,
(N=North, E=East, W=West, S=South)
8. The GPS satellite icon stops flashing before it can be used normally
9. Satellite numbers

Wave button function:



1. **Short press in:** confirm the option after entering the setting menu
2. **long press in:** enter the setting, after adjusting, press vertically for 2 seconds to save and exit
3. **Push left::** switch clock, driving time, acceleration time (move option after entering setting)
4. **Long push left:** push left for 2 seconds to turn off the buzzer alarm, do it again to turn on
5. **Push right:** switch driving distance, altitude, longitude, latitude (move option after entering the setting)

Enter setting mode:

Long press in to enter into the setting mode, press right to choose the menu, and short press in to confirm. Once finishing the setting, long press in to exit.

Menu	Function	Adjustment range	Explanation	Default value	Set parameter value interface
1	speed	50-150	Adjust the parameter value when there is an error between HUD and dashboard. Ex: dashboard displays 100 KM/H, HUD displays 105 KM/H. Please adjust the parameter value to 102.(107-5)	105	
2	Section 1 over speed alarm	0-250	When the vehicle speed reach to 150KM/H, HUD will give the alarm	150	

3	Section 2 over speed alarm	0-250	When the vehicle speed reach to 180 KM/H, HUD will give the alarm	180	
4	Section 3 over speed alarm	0-250	When the vehicle speed reach to 200 KM/H, HUD will give the alarm	200	
5	Fatigue driving alarm	1.0-8.0	HUD will give fatigue driving alarm each 8 hours	8.0	
6	Brightness adjustment	0-11	0=automatic sensitivity adjustment 1-11=manual adjustment	0	
7	Speed unit	0-1	0=KM/H (kilometers) 1=MPH (miles)	0	
8	Time Adjust	0:00-12:00	When the device searched the satellite successfully, adjust the device time as your local time and exit.	0	
9	Factory reset	0-1	default=0, →1, long press in for 2 seconds to save and exit		

GPS FAQ:

1.The screen without any display, and no power

Check whether the USB cable is damaged, replace the USB cable for testing, and prohibit the use of voltage higher than 5V for power supply

2.Without car speed

After HUD power-on, the satellite icon flashes will start to find the satellite. Please driving the car to the road. It will work after it stops flashing

3.Inaccurate time

When the device search the satellite successfully(the default 8:00 will change to China local time), set it to your local time and save and exit.

4.Speed is not correct

- (1) If the unit is correct,km KM/mile MPH, (speed unit switch reference settings item)
- (2) The car factory had increased speed(5-7%)than real for drivers' safety,satellite data is strictly follow the international standards
- (3) Fine-tuning the vehicle speed, e.g. meter display 100 Km/h, machine display 105Km/h,default value 107-5=102

5.Driving direction display error

After the vehicle speed exceeds 5KM / H, the direction can be displayed normally.

6.Speed is still displayed after the car stops

Under the underground parking lot, tunnel, under the overpass, there will be unstable satellite drift when there is obstruction.

7.Turn off the buzzer

Push left for 2 seconds to turn off the buzzer, do it again to turn on.