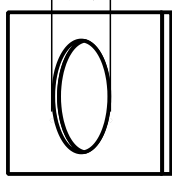


OWNER'S MANUAL

106-00035-02 ECP

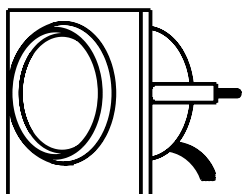
Φ52-53mm(2")



A

如A图,在准备安装仪表面板上开孔Φ52~53mm,并保证面板后面有至少70mm的空间。

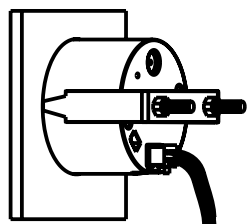
Pic A : Before installation , firstly ,to open a hole (Dia:52~53mm) of the panel, make sure there is a space with (70mm backyard of panel) as well



B

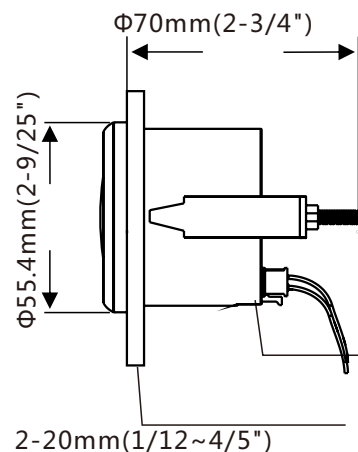
如B图,将仪表放入开好孔的仪表面板中

PicB: Put the gauge in the hole



如C图,用M4螺母和C型固定扣将仪表锁紧在仪表面板上

Pic C: Using M4 nut and C type bracket to seal up the gauge



D

如D图,关于外形尺寸的标注说明
Pic D: Size and annotations

速比调整:

- 1) 按住仪表黑色橡胶按键3秒,进入速比设置模式,如果松开按键3秒,退出速比设置模式,并自动保存所设置的数据。
- 2) 进入设置模式后,按住按键数值一直增加,松开按键,再按住按键,数字一直递减;速比调整范围:1-300,调整到您想要的速比值,松开按键3秒,数字自动保存
- 3) 如果您的传感器安装在飞轮盘上,速比值等于发动机齿轮数;如果转速信号取自W点信号,速比值等于电极数的一半(Poles/2)

典型速比设置参考:

舷外机	
电极数	速比
4	2
6	3
8	4
10	5
12	6

舷内机或汽油机		
气缸数	冲程	速比
4	4	2
6	4	3
8	4	4
10	4	5
12	4	6

柴油发动机	
飞轮齿数	速比
速比=发动机飞轮齿数	



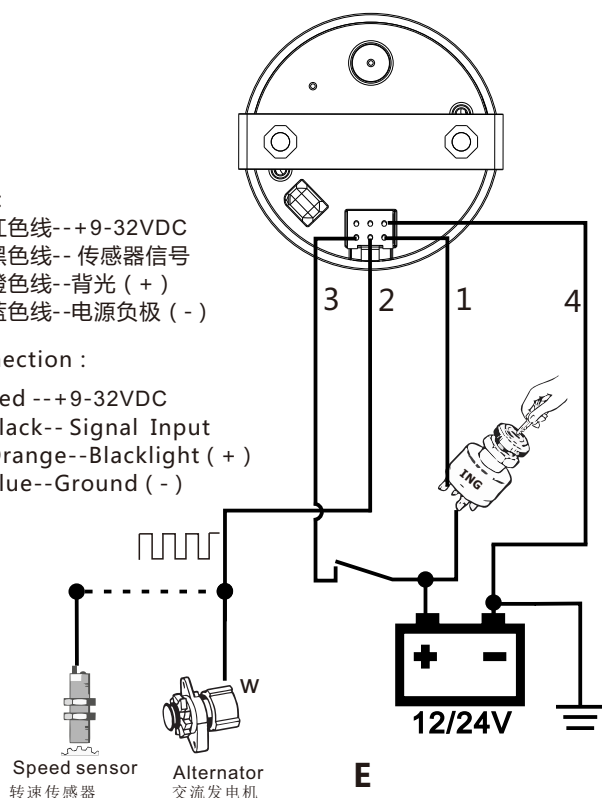
表示设置速比=96

接线:

- 1、红色线--+9-32VDC
- 2、黑色线--传感器信号
- 3、橙色线--背光(+)
- 4、蓝色线--电源负极(-)

Connection:

- 1、Red--+9-32VDC
- 2、Black--Signal Input
- 3、Orange--Blacklight(+)
- 4、Blue--Ground(-)



E

Pic E(Wires Connecting)

Speed ratio adjustment:

- 1) Press the instrument black rubber button for 3 seconds, and enter the speed ratio setting mode, if loosening the button for 3 seconds, quit the speed ratio setting mode, and automatically save the set data.
- 2) After entering the setting mode, press the button and numerical value increases; loosen the button, then press the button again, and the figure decreases; Speed ratio adjustment range:1.0-300, After the speed ratio is adjusted to your desired value, loosen the button for 3 seconds, and the figure is automatically saved.
- 3) If your sensor is installed on the flying wheel panel, the speed ratio is equal to the number of gears of the engine; If the speed signal takes from W point signal, the speed ratio is equal to the half of the number of poles.

Typical ratio setting reference:

Outboard	
poles	speed ratio
4	2
6	3
8	4
10	5
12	6

Inboard or Gas engine		
cylinder	cycle	speed ratio
4	4	2
6	4	3
8	4	4
10	4	5
12	4	6

Diesel engine	
Gear number	speed ratio
speed ratio=Gear number	



The set speed ratio=96

Specification:

Operating Voltage: 9~32VDC,
Operating current: ≤60mA;
Operating temperature: -30~+75°C
Storage temperature: -40~+85°C.

技术参数:

工作电压: 9~32VDC,
工作电流: ≤60mA;
工作温度: -30~+75°C
存储温度: -40~+85°C.